

NEW OFFERINGS

In 2019, Chapel Haven West undertook a comprehensive review of services. Based on wide ranging feedback from our families and professionals, we are proud to announce a new constellation of services with varying price points and choices for families looking for the next right step for their loved ones.

Flexible tuition options allow our adults to build their perfect program. CHW is an authorized DDD vendor, which may cover some day and residential costs for eligible individuals.



AMONG OUR NEW OFFERINGS:

■ Electronics Perseveration

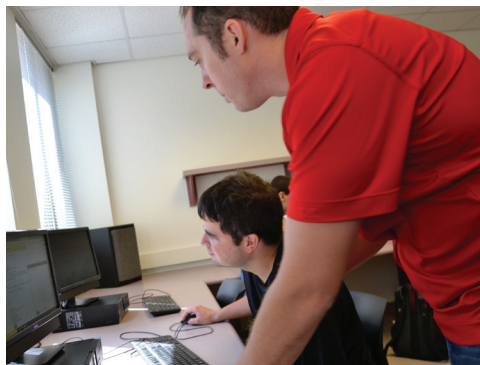
Addressing screen addiction and perseveration is a new addition to our unique curriculum designed around our expertise in social communicative competency. Teaming with Dr. Laurie Sperry, an internationally recognized forensic expert in autism, this area of our curriculum will address the barriers that Internet addictions present to adult success in all settings, from paid employment, to the college classroom, and learning to connect with a circle of adult friends.

■ Individualized Programming/Rolling admission

Our new model directs teaching into authentic settings where learning occurs most successfully. Our students benefit from individualized programming in the community, apartment, vocation and college settings, across a range of peer groups. We offer opportunities for individuals to join our programming throughout the year – individualized curriculum plans afford the flexibility to start when the time is right.

■ Expanded day and community life programming for local families

Along with our core residential and college/employment supports, we are pleased to announce expanded day-service offerings and “a la carte” supports to meet adults at each stage of their transition to independence. Chapel Haven West is an authorized DDD vendor and an approved school through the AZ Department of Education. Many families are pleased to learn their child’s DDD funding may cover a significant portion of day and residential costs at Chapel Haven West.



CHapel HAVEN
WEST
GROW THRIVE BELONG

OUR MISSION

Chapel Haven West provides lifelong individualized services for people with developmental and social disabilities, empowering them to live independent and self-determined lives.

ACCREDITATIONS

APPROVED BY THE AZ STATE DEPARTMENT OF EDUCATION

AUTHORIZED VENDOR FOR AZ STATE DEPARTMENT OF DEVELOPMENTAL DISABILITIES

OUR PARTNERS IN TUCSON:

Chapel Haven West has a wide variety of vocational and educational partnerships within the Tucson community. Here is just a sampling:

1st Rate, 2nd Hand Thrift Store
Arizona Theater Company
Autism Society of Southern AZ
Bark Avenue Grooming
Ben’s Bells
Compass Affordable Housing
DogTopia
The Drawing Studio
Felicia’s Farm
The Home Depot
Jim Click Automotive Team
Outback Steakhouse
Outer Limits Preschool
Pima Community College
(five campuses across Tucson)

Red Cross of Southern Arizona
Southern Arizona Arts and Cultural Alliance
Sprouts Farmer’s Market
Trader Joe’s
Tucson Botanical Gardens
Tucson Jewish Community Center
Tucson Marriott University Park
UofA College of Education
UofA Hillel Center
UofA Speech, Language, and Hearing Sciences
Veteran’s Administration Hospital
World Care

CONTACT INFORMATION

Chapel Haven Admissions Office
1040 Whalley Avenue, New Haven, CT 06515
Telephone: 203.397.1714, x148 or x185, Fax: 203.937.2466
E-mail: admission@chapelhaven.org



CHapel HAVEN
WEST
GROW THRIVE BELONG

Chapel Haven West is a nationally renowned program now offering new services



Tucson, Arizona

The pioneer in serving adults with varying abilities, since 1972

The Chapel Haven West Curriculum

Our curriculum was designed by international experts in autism and focuses in four key areas:

- **Social Communicative Competency**
- **Self-Determination / Screen Addiction**
- **Independent Living**
- **Supports for College / Employment**

Social Communicative Competency (SCC)

The SCC curriculum was designed by a team of experts and centers around our core learning components of **perspective taking, understanding the motives of others, growing safe and rewarding relationships, and managing the social expectations of others.** This part of the curriculum teaches students how to problem-solve social communication breakdowns, and how to consider the perspective of others. Expressive and receptive language is targeted to improve conversation.

With experienced speech-language pathologists trained in **Social Thinking** on staff, our social communication curriculum is taught in classrooms **at the University of Arizona**, in small-group settings, one-on-one on the Chapel Haven West campus, and is reinforced across community settings. A unique feature of our curriculum enrolls our students for two years in a **college level, credit-earning SCC class** offered through the University of Arizona and held on the UofA campus. The course is taught by graduate-level clinicians in the University's Speech, Language, and Hearing Sciences Department under the direction of Chapel Haven West speech language pathologists.

Self-Determination

An important component of the curriculum which is blended into all instruction is **self-determination.** We teach our students how to set achievable goals and make choices that will have a positive outcome, to be assertive at appropriate times, and to interact with others in a socially competent manner. Monitoring screen time is one of these goals and a choice we urge our students to make.

Independent Living

Students have the option to move into apartments in the Chapel Haven West residential building. Chapel Haven West students are taught the day-to-day skills necessary for **independent living** either as residents, or in our teaching-apartment settings as day or hybrid students. Areas of instruction include **administering medication, laundry, grocery shopping, budgeting, meal preparation and apartment maintenance.** A **Wellness Coordinator** works with students on nutritious meal planning, healthy eating habits, sleep hygiene, exercise routines, and healthy lifestyles. **Our students enjoy memberships to the UofA Campus Recreation Center,** where they can also access personal training, martial arts classes, pick-up basketball games, and indoor track.

Postsecondary Options – College Support

Chapel Haven West's location close to the **UofA** and **Pima Community College** campuses has many benefits. For some students, the university or college environment will offer the opportunity to sample classes and perhaps matriculate to full-time status; for others, exposure to vocational opportunities may be a priority. Pima Community College offers an array of Certificate Programs, and options for exploring college readiness. For all students, the University of Arizona atmosphere provides occasions for socialization, volunteering in the community, student clubs, intramural sports, mentoring by college peers, and the background of a vibrant, active college campus.

“ My son, Matthew, just completed his residential program at Chapel Haven West and is now in the Supported Living Program. He has high functioning autism and ADHD. After high school, we sent him to a traditional four-year college with excellent disability services. He flunked out his first year even with the support of his case manager.

We chose Chapel Haven West because our son could attend classes at University of Arizona as a non-degree seeking student and we liked the opportunities that my son would have attending this residential program. There have been many positive changes. I highly recommend this program if you have a young adult on the autism spectrum. ”

DEAN & CYNTHIA MARGOLIS, MINNETONKA, MN



A Wonderful Resource for CHW



Employment – Vocation Training

Chapel Haven West believes that living an independent and productive life works best when an individual develops competency in skill-based areas. Our vocational training begins immediately with **pre-vocational assistance** including **career exploration, resume building, honing interview skills, and emphasis on taking the perspective of your employer.** As students build their vocational skills, they participate in structured work-study experiences as they prepare for paid employment. Each student will work one-on-one with our vocation coordinator to explore their individual occupational goals. Paid employment comes as students master skills in perspective taking, are able to consider the “hidden curriculum” (i.e., those unwritten, unofficial, and often implied rules) of each employment setting, and consistently meet the expectations of employers.

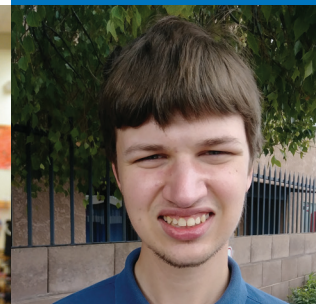
“ Chapel Haven West has helped our daughter, Lauren, reach her full potential as a young adult. The social and personal management skills gained have allowed her a high level of independence. After her graduation from the Chapel Haven West residential program, she is living in an apartment with other CHW graduates who all are employed in Tucson. She loves to cook healthy meals for herself and friends, and manages her own budget. Early Childhood education is one of our daughter's interests, and she is now working in a pre-school; a dream realized for her. The Social Communication Curriculum is excellent, and the tie to the University of Arizona provides a college experience. ”

CLINT & PEGGY DAMUTH, VIRGINIA BEACH, VA



“ Our son, Aaron, came to CHW with a solid foundation as far as knowing how to cook and clean and take care of himself. The huge missing piece was learning how to navigate through life and relationships and understanding what healthy relationships are, how they begin and how they grow. CHW has taught him all of this as well as advocating for himself and learning not to act on his immediate impulses. The best part is seeing him so happy and much more confident. ”

DAVID & MELINDA FRIEDMAN, SAN ANTONIO, TX



“ Like most bright young adults on the autism spectrum Philip needed a program with explicit coaching and supports to master the skills necessary for self-reliance and independent living. Through his experiences living in the Chapel Haven community Philip has learned to manage responsibilities for his apartment, his health, and his community college assignments and work study duties. ”

LEE & BRYAN JONES, DALLAS, TX

CHAPEL HAVEN WEST in Tucson, Arizona empowers adults 18+ with varying abilities to live independent and self-determined lives. This award-winning non-profit school and transition program offers a wide range of services, including structured-residential, day, college

and vocational supports, to meet individuals where they most need assistance. Our campus location, five blocks from the University of Arizona, provides a unique setting in a vibrant college community – perfect for adults who are ready to launch!